

# Y MDDIRIEDOLAETH HARBWR CAERNARFON

---

## CAERNARFON HARBOUR TRUST

### Rhybudd Morwriaeth Lleol

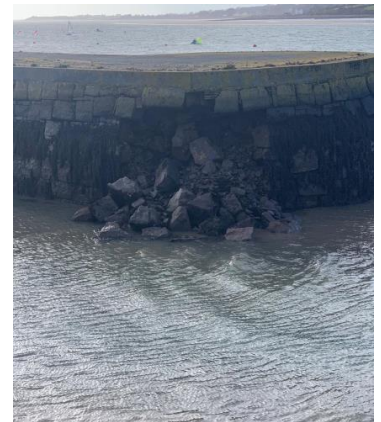
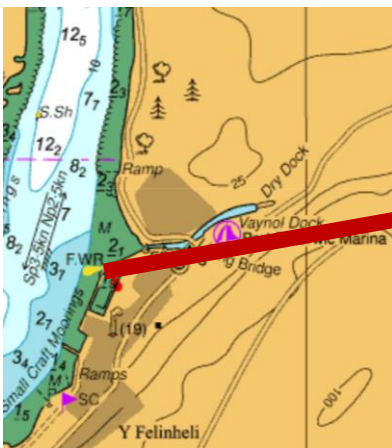
### Local Notice to Mariners

*Rhif – Number - 08/2020*  
13/03/2020

Y Fenai - Siart 1464 - Menai Strait - Chart 1464

Cynghorir morwyr bod darn o wal y cei y fynedfa i'r basn marina yn Felinheli wedi disgyn i mewn i'r fynedfa ac yn achosi Perygl Mordwyo sy'n ymestyn 3 metr tuag allan i'r sianel.

Cynghorir morwyr i fordwyo gyda gofal yn yr ardal hon.



Mariners are advised that a section of quay wall at the entrance to the marina basin in Felinheli has collapsed into the entrance causing a navigational Hazard that extends 3 Meters outwards.

Mariners are advised to navigate with caution in this area.

HARBOUR OFFICE, MANTON <ST HELENS RD, CAERNARFON, GWYNEDD. LL55 2PB

01286 875355 [hm@caernarfonharbour.org.uk](mailto:hm@caernarfonharbour.org.uk) [www.caernarfonharbour.org.uk](http://www.caernarfonharbour.org.uk)

David John O'Neill  
Harbwr Feistr Caernarfon Harbour Master