

NOTICE TO MARINERS

Menai Strait

Geotechnical Investigation.

Mariners are advised that an over water geotechnical investigation will be commencing on or around the 1st October until 20th December 2018 (weather dependant).

Description of Works:

As part of the development of the Horizon nuclear power station at Wylfa on Anglesey, a new 400 kV transmission connection is required between Wylfa and the 400kV substation on the mainland at Pentir (North Wales). A 4km cable tunnel is required beneath the Menai Strait and surrounding land.

A ground investigation (GI) has been designed by Mott MacDonald Ltd (MM) to investigate a section of the tunnel which crosses beneath the Menai Strait.

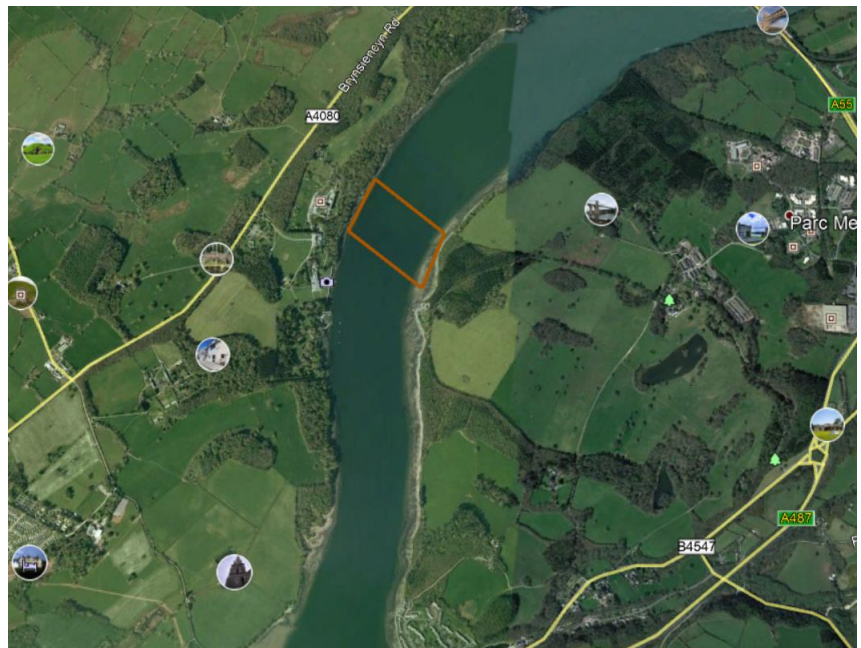
The works will include geotechnical and geo-environmental investigation to provide characteristic parameters for design.

All works will be completed from the jack up barge Aran 120A

The works are in the area as detailed on the Map below and comprises 12 No. Boreholes to approximately 50m depth

Menai Strait, indicative borehole locations

Borehole	Lat_WGS84	Long_WGS84
BH401	53.20499	-4.210979
BH402	53.204587	-4.211174
BH403	53.204697	-4.211356
BH404	53.204809	-4.211544
BH405	53.204917	-4.211737
BH406	53.205044	-4.211963
BH407	53.205158	-4.21215
BH408	53.20564	-4.210815
BH409	53.204911	-4.211965
BH410	53.204795	-4.211758
BH411	53.204682	-4.211565
BH412	53.204573	-4.211359



Vessels should keep clear of the jack-up barge at all times. Vessels are requested to;

Reduce speed to the minimum at which they can maintain safe steerage 15m from the jack up.

Movement of support vessels for material transfers/crew changes will take place on a daily basis when required between the crew change location, Port Penrhyn and the work site. All movements will be coordinated by the Bargemaster and Tug Master to ensure safe separation between all vessels in the vicinity.

Operations will continue on a 24hr basis. The Jack-up barge will be lit to allow night time operations along with the standard RED_WHITE_RED lighting to indicate that it is a **vessel restricted in her ability to manoeuvre**.

For any questions or queries regarding the above project please contact:

Name	Contact Number	Role
Adrian Ivor	07920504106	Fugro Site Manager
Gareth Mason	07786 445 123	Client Lead on Site



Aran 120A –jack-up Drilling platform



Support tug – **MTS Vulcan 2**



Crew Transfer RIB – **Oyster**