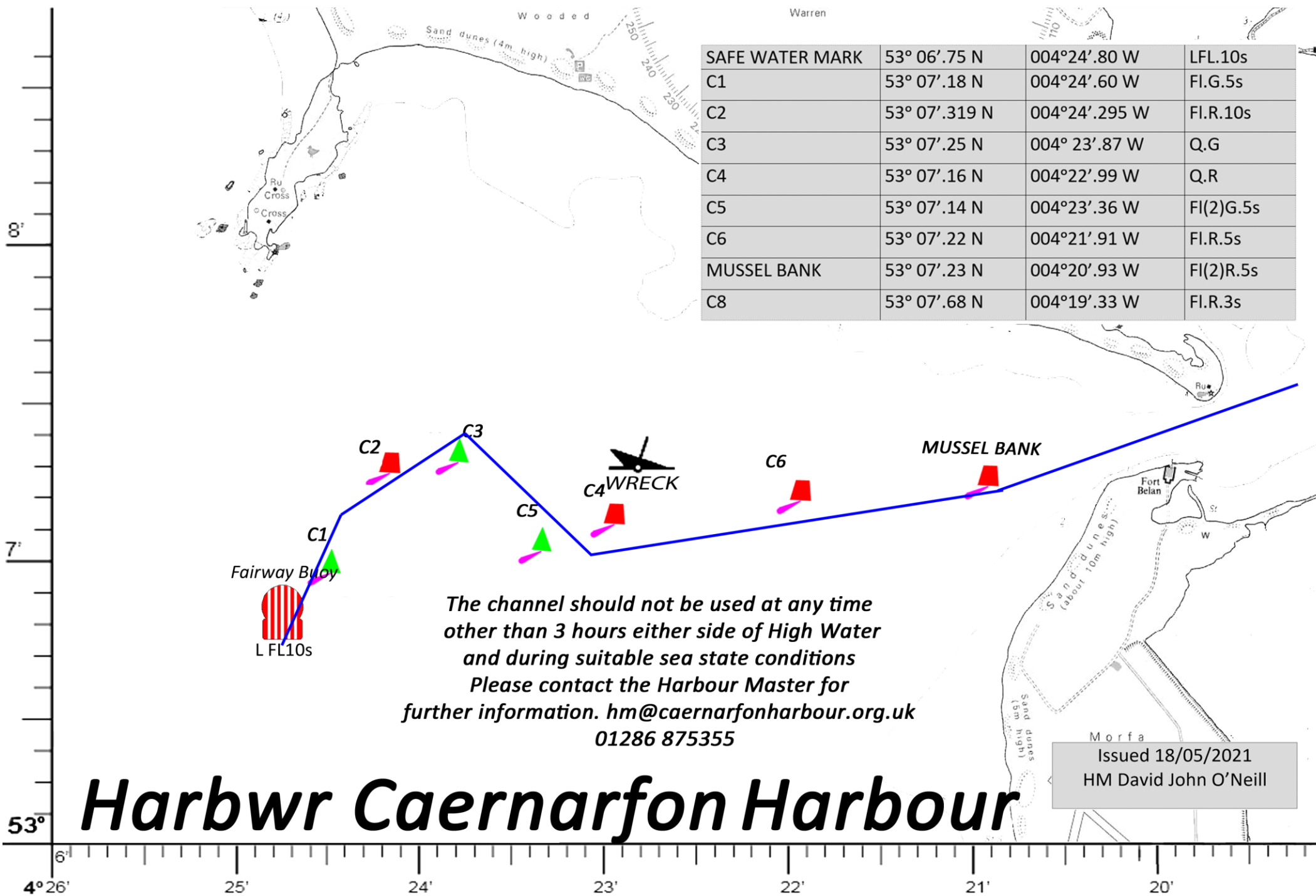




SAFE WATER MARK	53° 06'.75 N	004°24'.80 W	LFL.10s
C1	53° 07'.18 N	004°24'.60 W	Fl.G.5s
C2	53° 07'.319 N	004°24'.295 W	Fl.R.10s
C3	53° 07'.25 N	004° 23'.87 W	Q.G
C4	53° 07'.16 N	004°22'.99 W	Q.R
C5	53° 07'.14 N	004°23'.36 W	Fl(2)G.5s
C6	53° 07'.22 N	004°21'.91 W	Fl.R.5s
MUSSEL BANK	53° 07'.23 N	004°20'.93 W	Fl(2)R.5s
C8	53° 07'.68 N	004°19'.33 W	Fl.R.3s



*The channel should not be used at any time other than 3 hours either side of High Water and during suitable sea state conditions  
Please contact the Harbour Master for further information. [hm@caernarfonharbour.org.uk](mailto:hm@caernarfonharbour.org.uk)  
01286 875355*

Issued 18/05/2021  
HM David John O'Neill

# Harbwr Caernarfon Harbour

